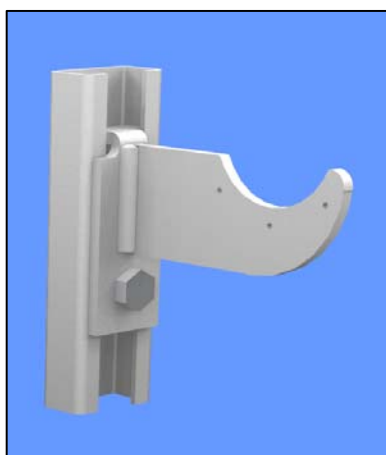


Art.190

Plain channel no 6 for pipe brackets until Ø 21/2", mounting holes Ø10,5mm, promatized

Other length on request

Length	Order number
200mm	190/02
300mm	190/03
400mm	190/04
500mm	190/05
600mm	190/06
700mm	190/07
800mm	190/08
900mm	190/09
1000mm	190/10



Art.180

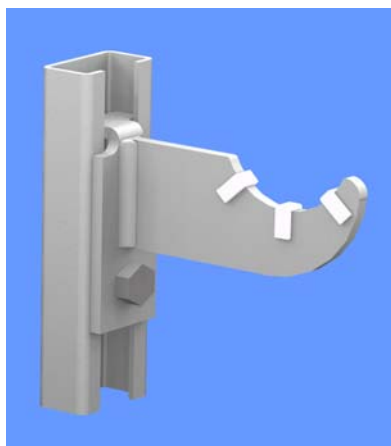
Pipe bracket suitable for art. 190, mounting with hex-head screw and thread base plate art.460/M8, promatized

Other dimension on request

Ordering information: wall distance

For pipe	Order number
3/8"	180/17
1/2"	180/21
3/4"	180/27
1"	180/34
1 1/4"	180/42
1 1/2"	180/48
2"	180/60
2 1/2"	180/76

WA=(wall until mid-pipe)



Art.185

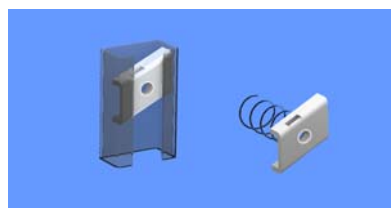
Pipe bracket, just like art. 180, but with sound-absorbing plastic insulation, promatized

Other dimension on request

Ordering information: wall distance

For pipe	Order number
3/8"	185/17
1/2"	185/21
3/4"	185/27
1"	185/34
1 1/4"	185/42
1 1/2"	185/48
2"	185/60
2 1/2"	185/76

WA=(wall until mid-pipe)



Art.460

Thread base plate with clip-spring for plain channel, promatized

Thread	Order number
M6	460/M6
M8	460/M8



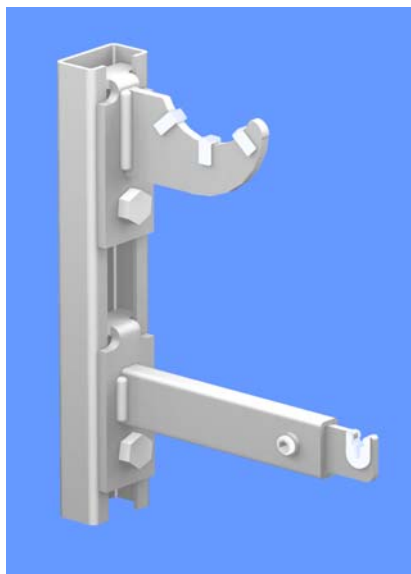
KONSOLEN AG

Hauptstrasse 30

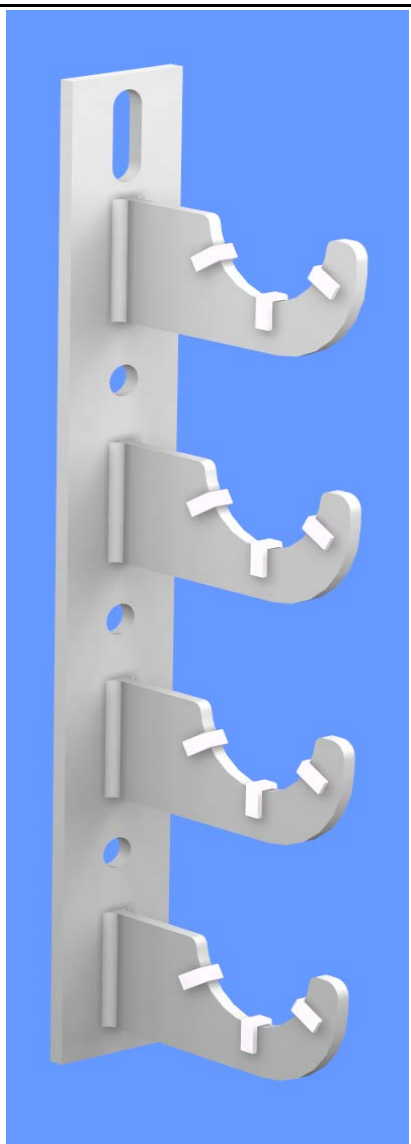
Telefon +41 61 935 20 20

CH-4417 ZIEFEN

Telefax +41 61 935 20 21



For mounting on plain channels we also produce brackets for heating walls, convectors, radiators, cable ducts and particular mounting elements.



Art.201/spez.

Multiple pipe brackets for wall mounting, with sound-absorbing plastic insulation, welded on flat steel 40/5

Order number

201/spez.

Ordering information: number of pipe brackets (2-fold - 8-fold)

Pipe dimension (\varnothing pipe)

Wall distance WA= (wall until mid-pipe)

Pipe pitch X

Art.200



Pipe bracket for wall mounting,
welded on baseplate 100x40x5mm,
pomatized

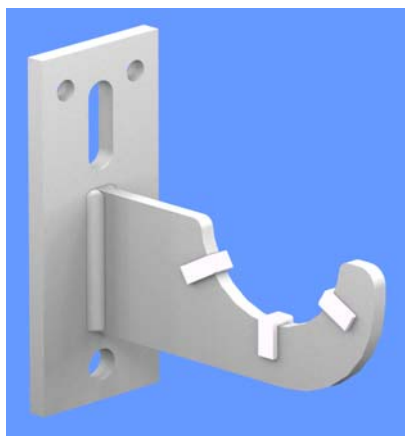
For pipe	Order number
3/8"	200/17
1/2"	200/21
3/4"	200/27
1"	200/34
1 1/4"	200/42
1 1/2"	200/48
2"	200/60
2 1/2"	200/76

Ordering information:

WA=(wall until mid-pipe, in mm)

Other dimension on request

Art.201



Pipe bracket for wall mounting,
just like art.200, buth with
sound-absorbing plastic insulation

For pipe	Order number
3/8"	201/17
1/2"	201/21
3/4"	201/27
1"	201/34
1 1/4"	201/42
1 1/2"	201/48
2"	201/60
2 1/2"	201/76

Ordering information:

WA=(wall until mid-pipe, in mm)

Other dimension on request



KONSOLEN AG

Hauptstrasse 30

Telefon +41 61 935 20 20

CH-4417 ZIEFEN

Telefax +41 61 935 20 21