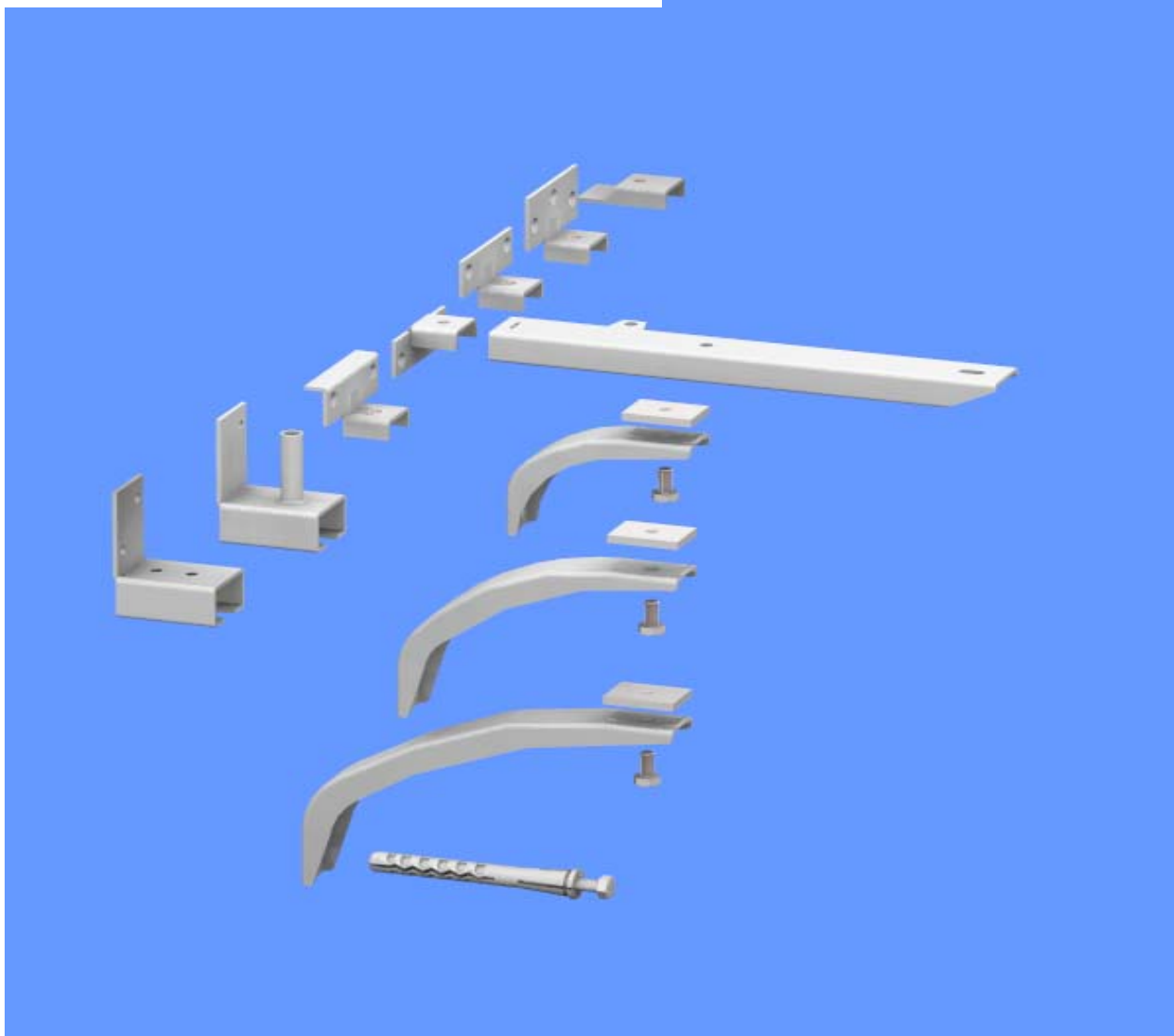


## Bracket for windowsill EUROPA

For ordering information look at the following page



The approved modular system  
with over 150 possible combinations



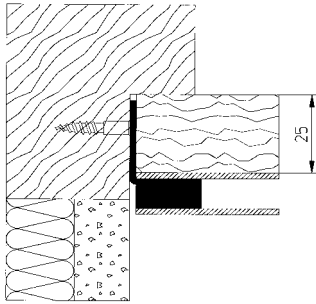
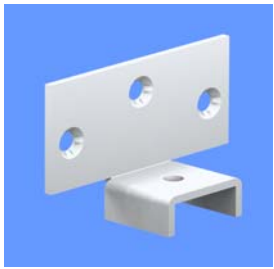
**KONSOLEN AG**

Hauptstrasse 30

Telefon +41 61 935 20 20

**CH-4417 ZIEFEN**

Telefax +41 61 935 20 21

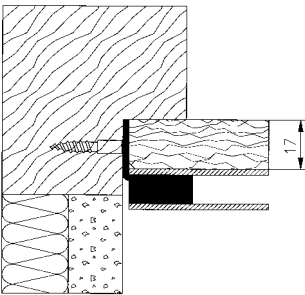


**Art.69**

Bent up fastening

Order number

69

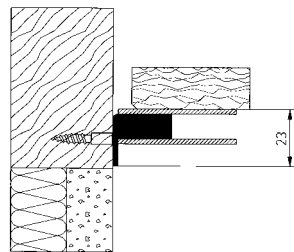
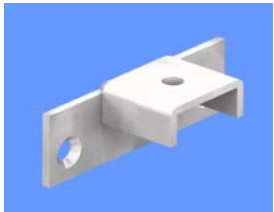


**Art.71**

Bent up fastening

Order number

71

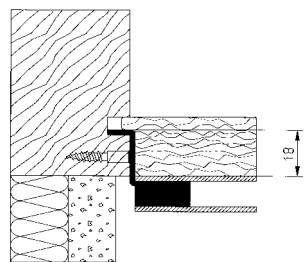


**Art.72**

Bent down fastening

Order number

72

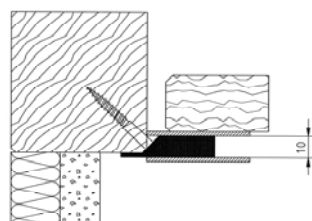
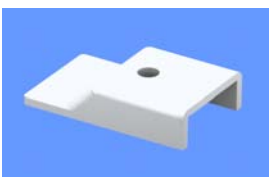


**Art.73**

Angled fastening for groove

Order number

73

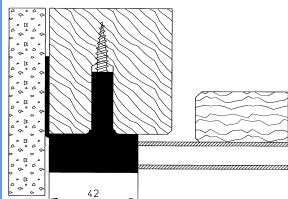
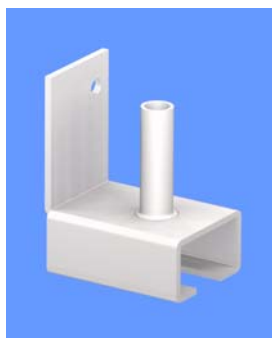


**Art.74**

Fastening with longitudinal plate

Order number

74

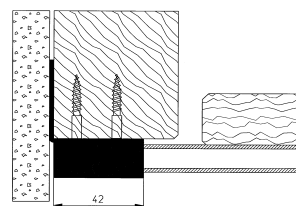


**Art.76**

Fastening for support Europa with countersunk head wood screw 6 x 60 mm

Order number

76



**Art.77**

Fastening for support Europa

Order number

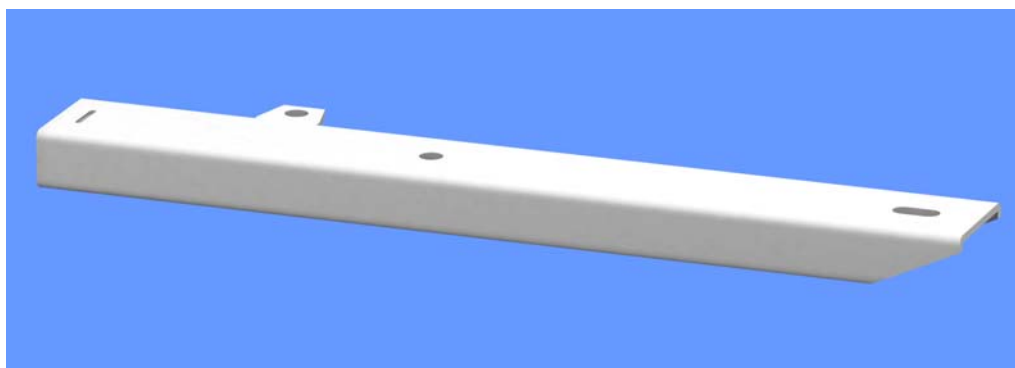
77

**Art.70**

Windowsill-support of c-profile 28x15mm with lateral plate

Length

Order number



60	70/060
80	70/080
100	70/100
120	70/120
140	70/140
170	70/170
200	70/200
220	70/220
270	70/270
320	70/320



**Art.78**

Bearing for windowsill-bracket Europa, complete with screw and thread base plate

L x H  
mm

Order number

80 x 55	78/080
120 x 85	78/120
160 x 100	78/160



**KONSOLEN AG**

Hauptstrasse 30

Telefon +41 61 935 20 20

**CH-4417 ZIEFEN**

Telefax +41 61 935 20 21

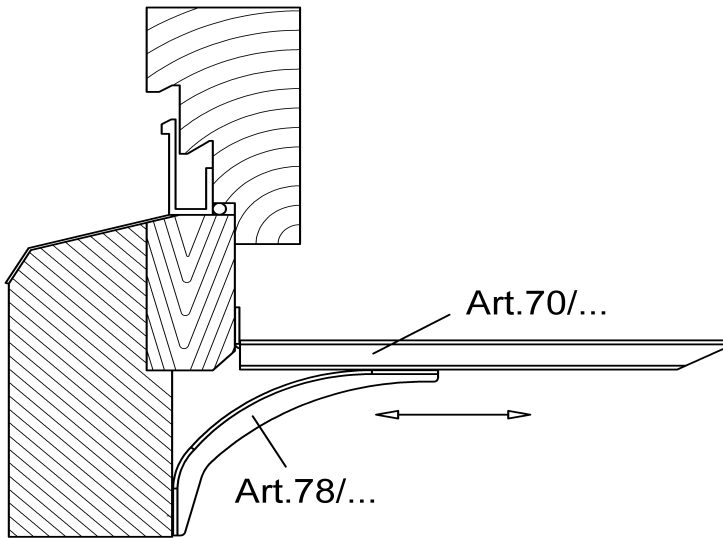


**Art.319/9**

Plastic dowel Ø 10 mm,  
complete with hex-head wood  
screw, suitable for art.78/1-3

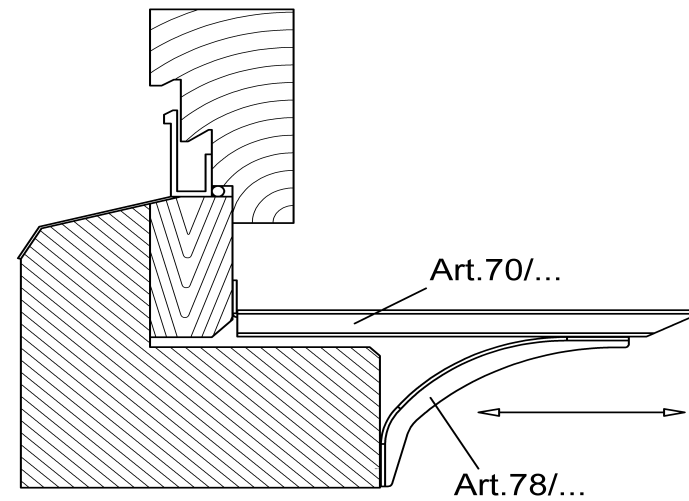
Length	Order number
90mm	319/9

**Example of assembly**



Parapet recessed

Bearing is freely adjustable



Parapet overhanging

Bearing is freely adjustable

Folding bracket



**Art. 59**

- L = 250 mm      59 / 250
- L = 300 mm      59 / 300
- L = 350 mm      59 / 350

without locking device

**Art. 59 / A**

- L = 250mm      59 / 250A
- L = 300mm      59 / 300A
- L = 350mm      59 / 350A

with locking device

Permissible load per bracket  
(evenly distributed load)

- L = 250mm      150 kg
- L = 300mm      125 kg
- L = 350mm      100 kg

Folding bracket of u-profiles, with a bearing that latches automatically. Latches automatically when opened. To unlatch just lift the locking device briefly.  
Version: thermo-coated white



**KONSOLEN AG**

Hauptstrasse 30

Telefon +41 61 935 20 20

**CH-4417 ZIEFEN**

Telefax +41 61 935 20 21

**The extra-solid shelf board bracket Art.55**

Shelf board bracket of square-cut steel tube 20/20mm, with plastic closing-off and 4 mounting holes  
 Ø 6,5 mm, promatized



Dimension	Order number
mm	
100/125	55/100
150/175	55/150
200/225	55/200
250/275	55/250
300/325	55/300

Permissible load per bracket (evenly distributed load)	150mm = 150kg
	200mm = 120kg
	250mm = 100kg
	300mm = 80kg